

# NANUK

1059, boul. des Entreprises Ouest  
Terrebonne, QC Canada J6Y 1V2  
Tel 450.628.1006 1.800.783.6883  
www.nanuk.com

## CUBED FOAM INSERT

## 976\_NANUK

PROJECT

PRODUCT

00976\_NANUK\_p.00

DWG ID

STATUS

YOUR SIGNATURE IS REQUIRED FOR APPROVAL BEFORE ANY RELEASE OF PRODUCTION DRAWINGS

SIGNATURE

DATE

## TOLERANCES

CUTOUTS +/- 1/16

OVERALL FOAM THICKNESS & CAVITY DEPTHS +/- 1/8

GLUED TO CASE TOP ☐ BASE ☐ VELCRO ☐ EXTRA ☐

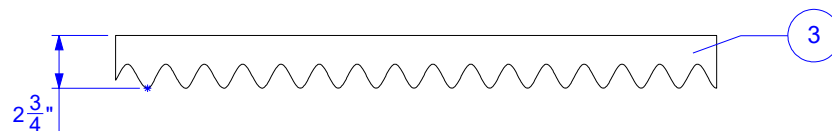
REVISIONS

REV.	DESCRIPTION	DATE	INIT

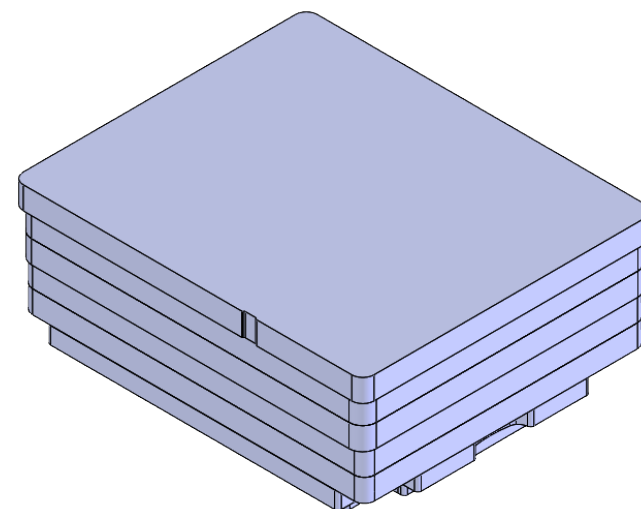
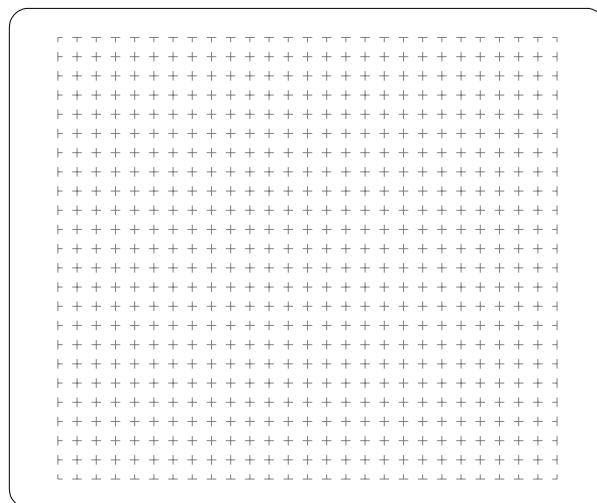
### LID TRAY ELEVATION

CV STANDARD

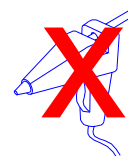
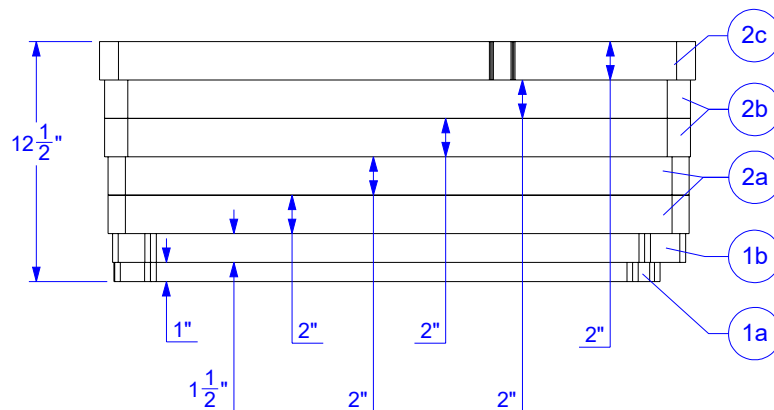
1-97603



### BASE TRAY



### BASE TRAY ELEVATION



!! LOOSE !!

PROPRIETARY AND CONFIDENTIAL

THE INFORMATION CONTAINED IN THIS DRAWING IS THE SOLE & EXCLUSIVE PROPERTY OF PLASTICASE INC.  
ANY REPRODUCTION IN PART OR WHOLE WITHOUT THE WRITTEN PERMISSION OF PLASTICASE INC. IS PROHIBITED.

DO NOT SCALE DRAWING  
SHEET SCALE 1:10

Frank Vitiello  
REPRESENTATIVE

Woodyne Veillard  
DESIGNER

2024-03-11  
DATE

1/8

FOAM DENSITY MAY VARY  
DIMENSIONS ARE IN INCHES UNLESS OTHERWISE SPECIFIED

# NANUK

1059, boul. des Entreprises Ouest  
Terrebonne, QC Canada J6Y 1V2  
Tel 450.628.1006 1.800.783.6883  
www.nanuk.com

## CUBED FOAM INSERT

PROJECT

YOUR SIGNATURE IS REQUIRED FOR APPROVAL BEFORE ANY RELEASE OF PRODUCTION DRAWINGS

SIGNATURE

## 976\_NANUK

PRODUCT

00976\_NANUK\_p.00

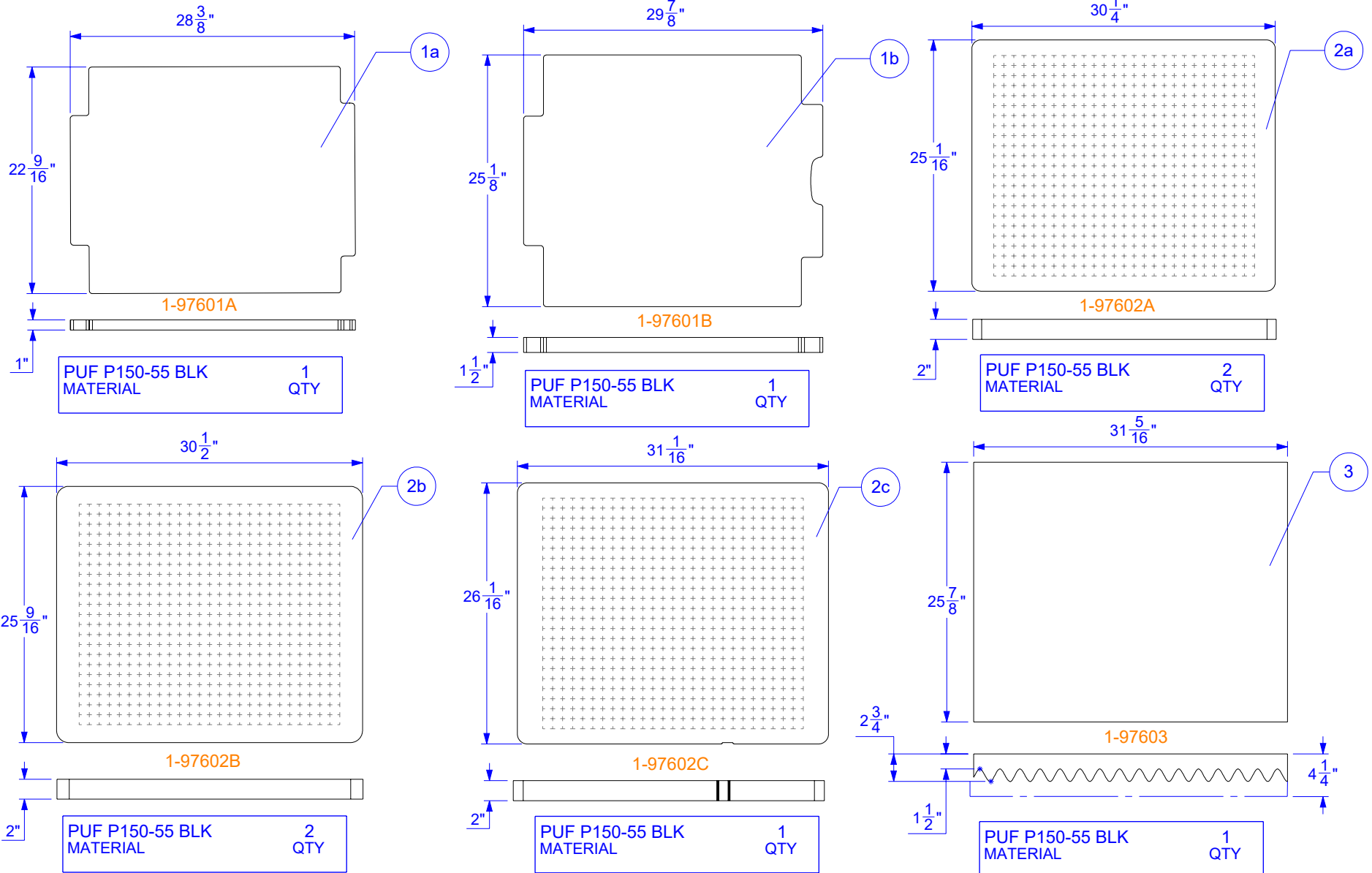
DWG ID

STATUS

## TOLERANCES

CUTOUTS +/- 1/16

OVERALL FOAM THICKNESS & CAVITY DEPTHS +/- 1/8



FOAM DENSITY MAY VARY  
DIMENSIONS ARE IN INCHES UNLESS OTHERWISE SPECIFIED

### PROPRIETARY AND CONFIDENTIAL

THE INFORMATION CONTAINED IN THIS DRAWING IS THE SOLE & EXCLUSIVE PROPERTY OF PLASTICASE INC.  
ANY REPRODUCTION IN PART OR WHOLE WITHOUT THE WRITTEN PERMISSION OF PLASTICASE INC. IS PROHIBITED.

DO NOT SCALE DRAWING  
SHEET SCALE 1:12

Frank Vitiello  
REPRESENTATIVE

Woodyne Veillard  
DESIGNER

2024-03-11  
DATE

2/8